



TYPE
1

M O K O T Ó W



HYGGE

APARTMENT

COMFORT

**THE LARGEST APARTMENT ON
THE FIRST FLOOR**

..... **82.18 m²**



"Comfort" is the perfect apartment, for example for a family with two or three children, which helps to create a real home - filled with peace and love. Its space consists of three cozy bedrooms, a large bathroom and a separate toilet. The meeting place of the household was designed to fade out/mute and unite: the living room was combined with the dining room and kitchen. In addition this two large balconies, which invite you for a morning coffee.

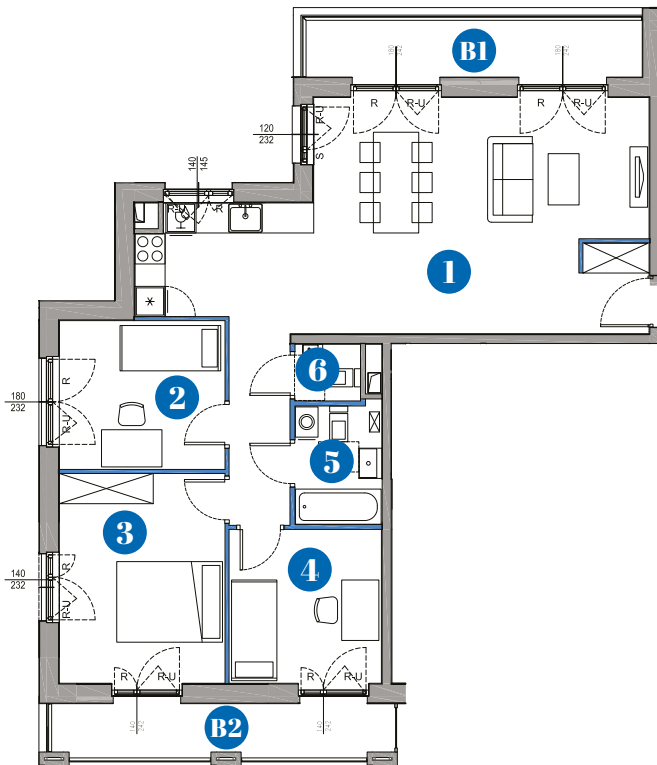


APARTMENT

COMFORT

POWIERZCHNIA
LOKALU:
82.18 m²

POWIERZCHNIE
BALKONÓW:
B1 8.00 m²
B2 7.56 m²



- 1** LIVING ROOM WITH A KITCHENETTE: **43.93 m²**
- 2** ROOM 1: **9.72 m²**
- 3** ROOM 2: **13.70 m²**
- 4** ROOM 3: **9.24 m²**
- 5** BATHROOM: **4.13 m²**
- 6** BATHROOM: **1.46 m²**

SCALE

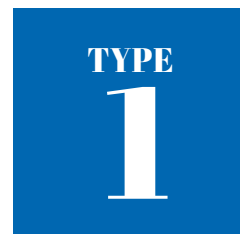


UNREMOVABLE WALLS

WALLS POSSIBLE TO DEMOLITION

WINDOW NAMES:
R – turn-only,
R-U – tilt and turn,
S – fixed

Surfaces calculated according to PN-ISO 9836, 2015
 Surfaces are subject to change
 Equipment for presentation purposes only, does not constitute a contractual obligation
 This project does not constitute an offer within the meaning of the Civil Code
 The height of the flat H = 275 cm, takes into account the finishing layers of the floor and ceiling
 In the kitchen, bathrooms and toilet, flush-mounted installations
 The flats will be equipped with mechanical exhaust ventilation



FLOOR

